

Collaboration with Umamusume: Pretty Derby  Collab Duration  Nov. 11, 2023 - Jan. 8, 2024



## EVENT Planned Events



MEGA TREE Ornaments (Light Show)  
Umamusume Collaboration Ver.

MUSIC

Tokyo Mega Illumination Collaboration Music  
"KIRARI MAGIC SHOW"



Rainbow-Colored Light Fountain  
Umamusume Collaboration Ver.

MUSIC

Anime Season 2 Opening Song  
"Yume o Kakeru"



Venue Announcements  
by Umamusume!!



Character panel installation  
Location: L-WING 1F

## GOODS Collaboration Merchandise

Location: L-WING 2F New original collab goods for sale!



Framed Magnets  
8 designs  
¥770 each (tax incl.)



Wall Scroll  
1 design  
¥3,850 (tax incl.)



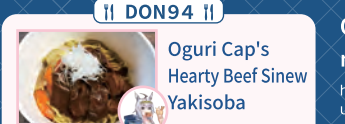
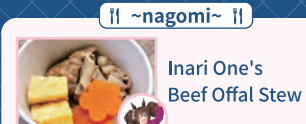
Light-Up Wristband  
1 design  
¥1,980 (tax incl.)

and more!

Spend ¥4,400 (tax incl.) or more to receive an original shopping bag as a gift!  
\*Available while supplies last. 1 bag per purchase at checkout.

## FOOD Collab Menu

Collab food, desserts,  
and drinks for sale!



Check this page for  
more details!▶

<https://www.tokyomegaillum.jp/umamusume-tmi-collabo.html>  
© Cygames, Inc.



For sale at **G-FRONT** and **L-WING**.



Chocolate filled cookies



Mascot keychains



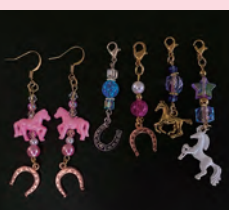
Hand towels



Shining keychains  
(horse shape・horseshoe shape)



Light up (glowing) candies



Horse staff "handmade"  
accessories



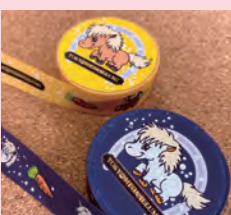
Miniature Horse embroidered  
handkerchiefs



Walkie Talkie &  
Horse phosphorescent keychains



Miniature Horse  
Printed Ramune sweets



Miniature Horse  
Masking Tapes



Miniature Horse  
Plush Toys

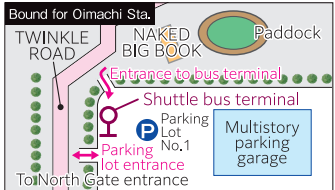


Miniature Horse can cases

\*Items are subject to change without notice.

## Bound for JR Oimachi Station Free direct shuttle bus service

\*Only Saturdays, Sundays, holidays, and Dec. 25 during the event (Nov-Jan)  
Stop for bus to Oimachi Station - Oi Racecourse Parking Lot No.1



Hours	Saturdays & Dec. 24/25	Sundays & Holidays (excl. 12/24)
6 PM	05 20 35 50	00 20 40
7 PM	05 20 40	00 20 40
8 PM	00 20 40	00 20 40
9 PM	00	00

\*Event schedule and details are subject to change without notice due to weather or other conditions.  
\*Check the official website for the latest venue details, prohibited items, etc.  
\*All information is up-to-date as of early November 2023.  
\*All images are for illustrative purposes only. Actual products/displays may vary.

Ticket discounts  
for advanced  
purchase

Details here ▶



<https://www.tokyomegaillum.jp/>  
[TOKYO MEGA ILLUMINATION] 2-1-2 Katsushima,  
Shinagawa-ku, Tokyo (Oi Racecourse)  
TEL: 03-3762-5230

(office hours)  
\*Except for New Year's holidays, etc.  
Mega Illumi Business Days: 10 AM-9 PM  
Mega Illumi Non-Business Days: 10 AM-5 PM

## Venue Guide



Tokyo Mega Illumi 2023-2024

## Horse Events

Cute horses unique to  
Tokyo Mega Illumination  
(Oi Racecourse)  
appear in the venue every day!!  
Photography is also OK.  
You will be healed by the kind horses.

Click here for more  
information on  
the horses ▶



## Miniature Horse & Pony/Lead Horse

The miniature horse is 85 cm or less tall, and the pony is a cute horse with a height of 147 cm or less!! They'll be waiting for you in style with ribbons, hats, decorations, etc...!! Be sure to take a look at the beautifully knitted mane and cute decorations!! A horse leading the pre-race racehorses which used to race as a racehorse. The fur and movement are beautiful!



Next to G-FRONT



Lead Horse x Fountain

Time & Location \*These events can be enjoyed for free.

	17:00	17:30	18:00	18:30	19:00	19:30	20:00
Miniature Horse & Pony			Daily	Next to G-FRONT	Only on Saturdays, Sundays, and holidays	Grazing ground	
Lead Horse			Only on Saturdays, Sundays, and holidays	Inside of the Riding ground (in front of the fountain)			

- Horses are timid and sensitive, so please keep the following points in mind:
- Do not surprise by making loud noises and voices, or jumping nearby
  - They are not good at instantaneous light, so please don't use the flash function of the camera
  - Do not go behind the horses because there is a possibility of being kicked
  - Do not touch the eyes, ears, or mouth of horses

\*Please be sure to disinfect your hands.  
\*It may be canceled or changed due to weather and the physical condition of the horse.



**RODY**  
GYMNIC



**40<sup>th</sup>**  
Anniversary  
2024 Celebrating 40 Years of RODY

**Play with RODY!**

**RODY x Tokyo Mega Illumination @ L-WING 1F** **Free**

**Activity space** Operation: Open-8:00 PM

Want to feel like a jockey? Try riding on RODY!

Play RODY ring toss!

**Stamp Rally** Sheets: Open-7:30 PM Raffle: Open-8:00 PM

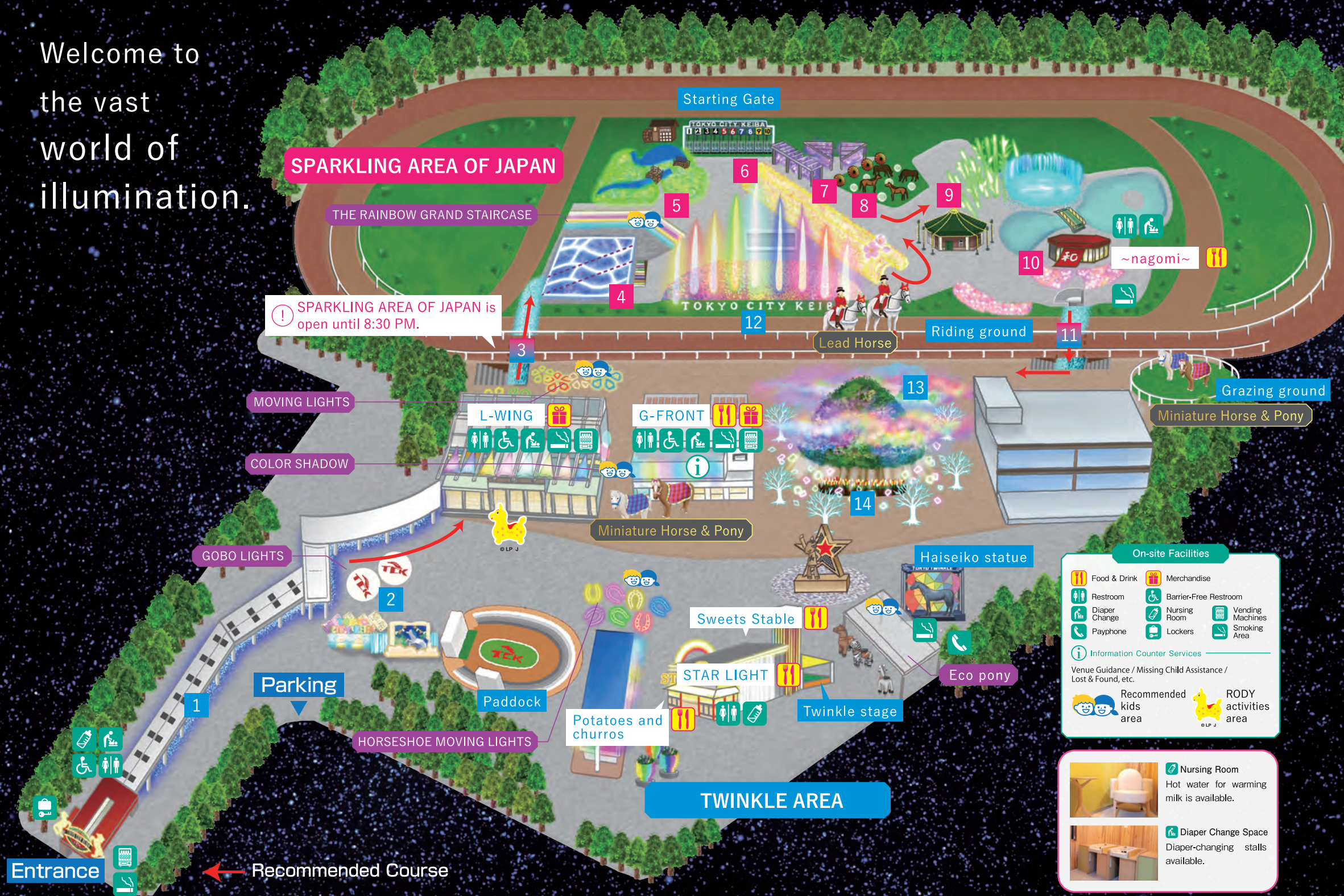
Collect 3 stamps to enter a raffle to win a RODY and other goodies!

Enjoy!!

\*1 stamp sheet per person, while supplies last.



Welcome to  
the vast  
world of  
illumination.



Get your sweets,  
hot foods,  
and drinks here!

Find out more  
about the  
menus here ▶

<https://www.tokyomegallumi.jp/gourmet.html>



#### STAR LIGHT



NY Style Steak .....¥2,800  
Coconut Chicken Curry .....¥1,300  
STAR LIGHT Pork Innards Stew .....¥500  
STAR LIGHT Winner Dog .....¥800  
and more!

#### ~nagomi~



Homemade Fried Chicken ...¥700  
Steamed Meat Bun .....¥300  
Umatase Donuts .....¥550  
and more!

#### Potatoes and churros



Horseshoe churros .....¥650  
Various kinds of potatoes ..¥500+  
(sidewinder, waffle fries, etc.)  
and more!

#### Sweets Stable



「Marion Crepe」  
Strawberry, Banana, & Chocolate Special ..¥700  
「Matsuan」Bullseye Dango (Illumi Ver.) ..¥300  
and more!

#### G-FRONT

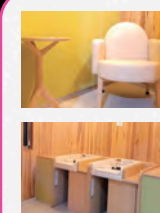


Tsurumaru Udon Kitsune Udon...¥450  
Indian Roux Pork Cutlet Curry...¥950  
DON94's Hokkaido Pork Bowl...¥750  
and more!



\*Prices are subject to change.

On-site Facilities	
Food & Drink	Merchandise
Restroom	Barrier-Free Restroom
Diaper Change	Nursing Room
Playphone	Lockers
Information Counter Services	
Venue Guidance / Missing Child Assistance / Lost & Found, etc.	
Recommended kids area	RODY activities area



- Nursing Room**  
Hot water for warming milk is available.
- Diaper Change Space**  
Diaper-changing stalls available.

